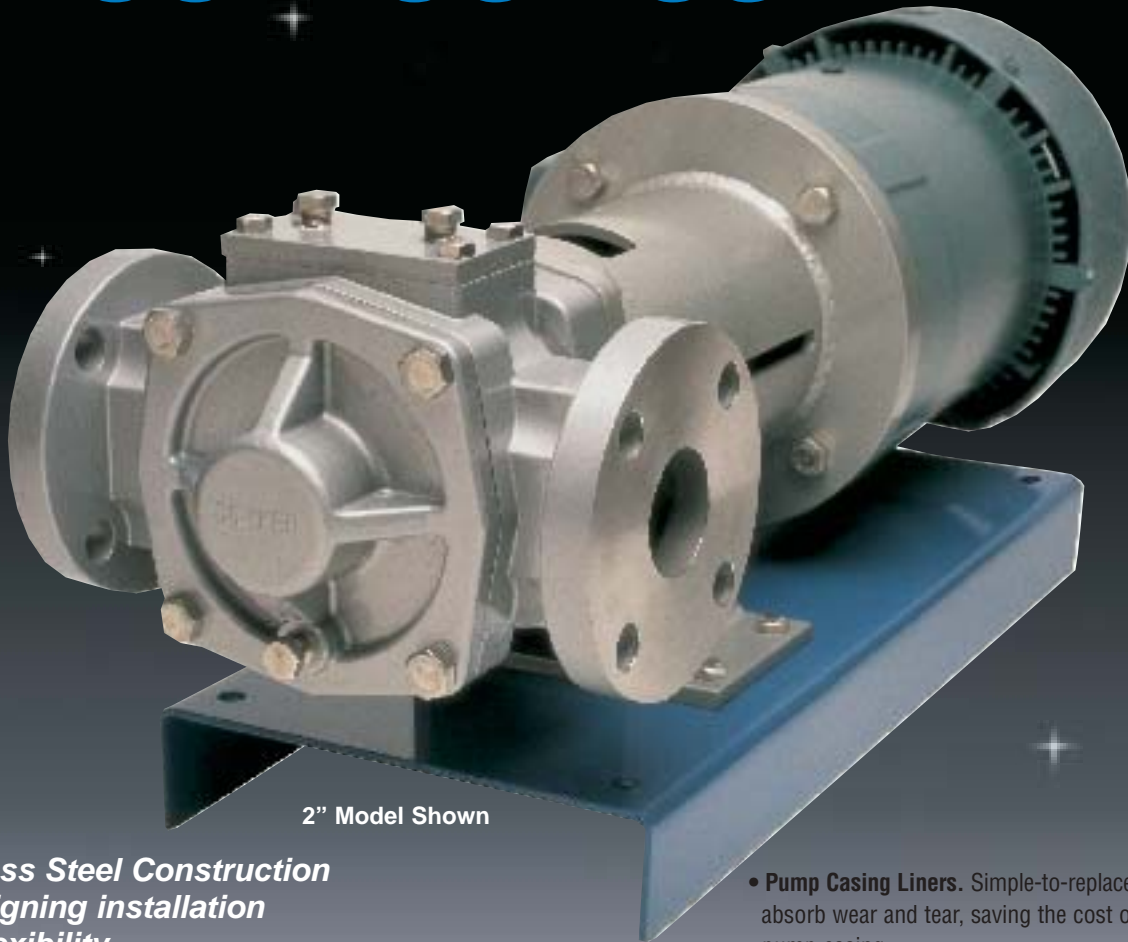


Explore the possibilities of our Stainless Steel Vane Pump...
It's light years ahead of the competition.

SSV-Series



2" Model Shown

- **Stainless Steel Construction**
- **Self-aligning installation**
- **Seal flexibility**
- **Replaceable service items**
- **Flows to 65 GPM**

With its stainless steel construction, flexibility and ease of installation, the Corken Stainless Steel Vane Pump offers a wide range of possibilities for industrial applications. Corken, a unit of IDEX Corporation, has been manufacturing pumps for the past 75 years, giving you the confidence that you'll receive a quality product backed by superb customer training and service.

- **Type 316 Stainless Steel Construction.** Corrosive resistant materials and low-residual volumes between applications reduce potential for cross contamination, allowing for a wider range of liquid applications than iron pumps.
- **Universal seal.** Accepts most cartridge and component mechanical seals, offering maximum choice and flexibility.
- **Direct Motor Speeds.** Operating speeds of up to 1750 RPM eliminate the need for costly reduction drive components; however, optional reduced speed components are available if desired.

- **Pump Casing Liners.** Simple-to-replace liners and sideplates absorb wear and tear, saving the cost of replacing expensive pump casing.

- **Back Pull-Out Design.** Necessary service repairs may be made without disturbing piping or taking the pump off-line which will reduce labor costs.
- **Ease of Installation.** Both direct-connect and gear-speed-reduced models self-align—eliminating time-consuming and costly alignment procedures which extend pump and seal life.

So many valuable features available in one high quality pump. Go ahead... explore the possibilities of the Corken Stainless Steel Vane Pump. For more information, contact your Corken distributor.

Solutions beyond products...

CORKEN
IDEX

Corken, Inc. • A Unit of IDEX Corporation
P.O. Box 12338, Oklahoma City, OK 73157 U.S.A.
(405) 946-5576 FAX (405) 948-7343
Visit our website at <http://www.corken.com>
e-mail us at corken@corken.com

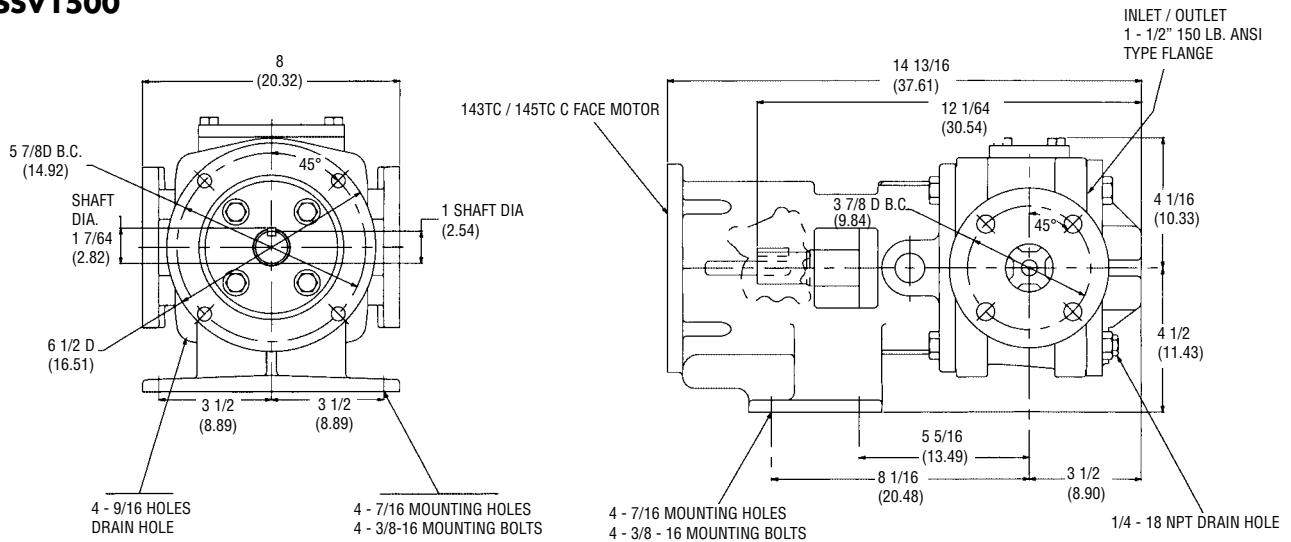
STANDARD CONSTRUCTION / SPECIFICATIONS

Model	Port Size	Nominal Flow	Maximum Hydrostatic Pressure	Casing Shaft & Heads	CAM (Liner)	Blades & Drivers
SSV1500	1-1/2" 150# ANSI	35 GPM	400 psig	316 ss	316 ss	PEEK
SSV-2000	2" 150# ANSI	65 GPM	400 psig	316 ss	316 ss	PEEK

Model	Sleeve Bearings & Sideplates	O-rings	Seal Faces	Seal Type	Mounting Bracket	Relief Valve	Shipping Weight (Less Motor)
SSV1500	Carbon Graphite	Viton®	Carbon vs. SiC	Crane 8.1	C-Faced	Std Without	100 lb.
SSV-2000	Carbon Graphite	Viton®	Carbon vs. SiC	Crane 8.1	C-Faced	Std Without	120 lb.

Viton® is a registered trademark of Dupont.

SSV1500



SSV 2000

